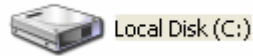


Adding 3 of 9 Barcode font to Windows fonts

- Save the 3 of 9 Barcode font to a location and write down the location.

- Go to your primary Hard Drive:



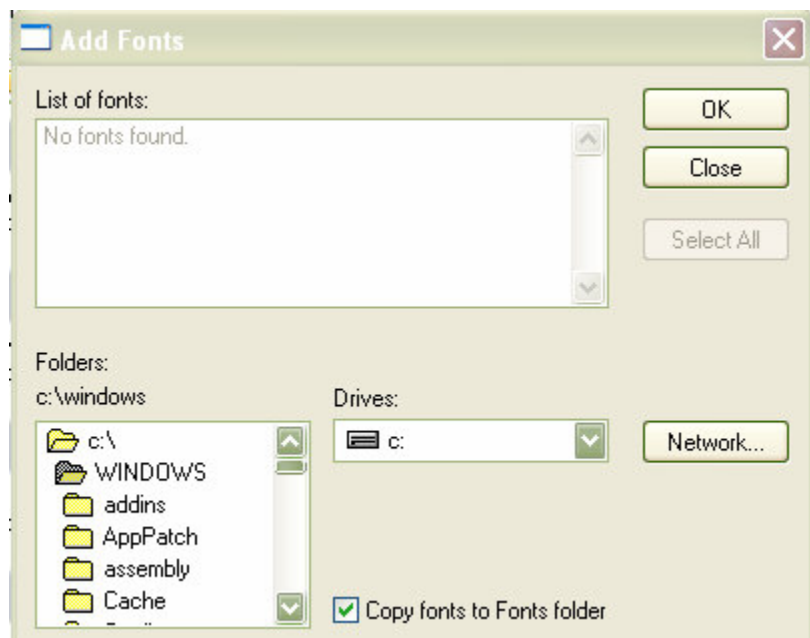
- Go to your Windows folder:



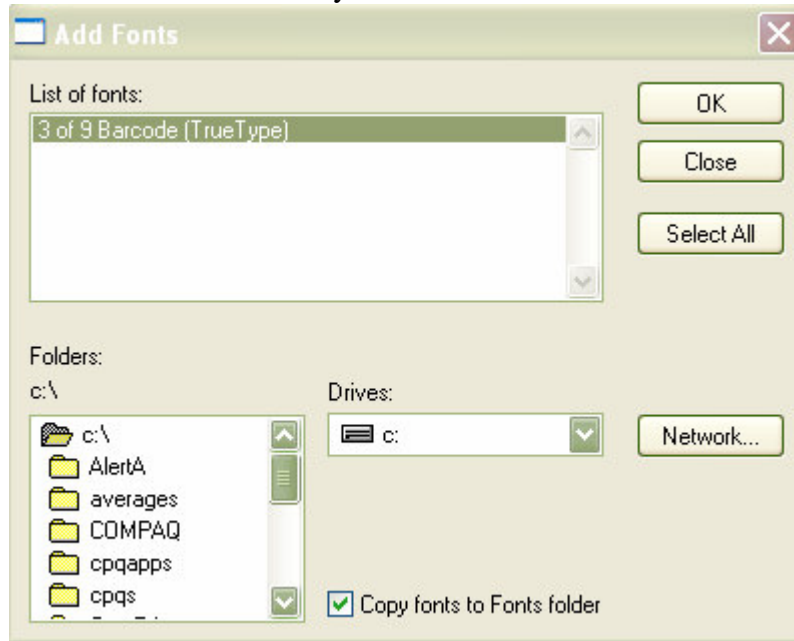
- Go to your Fonts folder:



- Go to **File** and choose **Install New Font**:



- Go to the location where you have saved the font



- Click on OK. Your font has now been installed on the system.